



The Good News

MID-MONTH EDITION

No. 2

January 17, 2019

Published twice monthly by the First Presbyterian Church of Commerce, Texas

Slow Down and Pay Attention

The Son of God, the little baby in the manger in Bethlehem, is quickly growing up as we progress through the liturgical year. God has given him all power. I came across a Bible verse that says this so much more beautifully than I can. It is Colossians 1: 19. *"For in him all the fullness of God was pleased to dwell, and through him was pleased to reconcile to himself all things, whether on earth or in heaven, by making peace through the blood of his cross."*

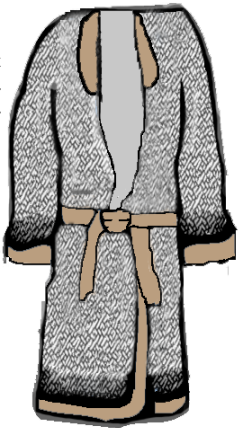
Last week, Rev. Rasco talked about Jesus being baptized. It set him on the path to that cross. Between now and Easter, the pace of Jesus' remarkable life among us goes even faster. I sometimes wonder if Jesus felt rushed to get things done. He certainly knew his time on earth was short. But I suspect that he took the time to notice everything—at least everything that was important.

That's what I would like to do. Life, at least for me, seems to go by so fast. It is mid January and before you know it, the cold weather will be gone, green will return to the grass and trees, birds will start singing their spring songs, Lent will come and go and Easter will arrive on April 21.

One of my resolutions for the new year is to slow down and spend more time enjoying the little and big things as they come and not rushing by them to tick off another check box in my schedule. If you know me, you'll agree that I already have mastered the art of slowing down. But I haven't mastered the equally important aspects of focus and enjoyment. Many times I have discovered that I didn't appreciate something because I wasn't focused on it. I missed out on some of the enjoyment of the moment because I was not paying enough attention. That applies to life and to studying the words God has left us. When I discovered the Colossians verse above, I slowed down and read it several times. Each time it seemed to be more inspirational to me.

Everyone is different, but I suggest that for the coming year, it wouldn't hurt if we all slowed down a little and enjoyed smelling whatever metaphorical roses come our way.

Donations of Robes and Slippers Needed Once Again



FPC's Robes and Slippers Campaign has begun again. Robes, house shoes, slippers, socks for sleeping, and gift bags are all needed. Please bring any items you collect to the FPC office.

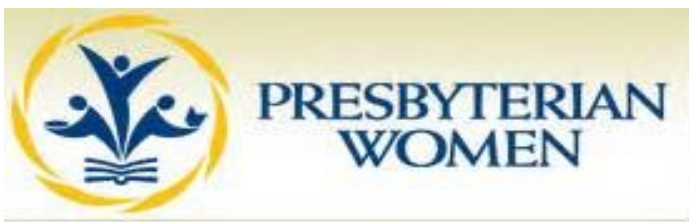
These will be matched and delivered to the nurses at Kindred Hospice in Greenville sometime in late

February. New or used items in good condition will be accepted.

Many thanks to **Jane Cox** and **Tina Selvaggi** for already donating!

Congregational Meeting This Sunday

After FPC's worship service this Sunday (Jan. 20), there will be a congregational meeting. This annual meeting is for the purpose of approving changes to the pastor's term of call.



PW Circle Meeting

The next PW Circle meeting is Monday, Feb. 11, at 10 a.m. in Fellowship Hall. **Helon Razniak** is the scheduled leader and **Jane Cox** is the scheduled hostess. The suggested donation for the food pantry is canned chili without beans.



save the date!
**2019
 WOMEN'S
 RETREAT**
tenth anniversary
 February 1-3, 2019

Call Camp Gilmont
 at 903-797-5400

*"Where have you
 been, and where are
 you going?" Gen. 18*

Retreat Leader
 Rev. Kate McGee

Food Pantry Donation Items

The Commerce Food Pantry typically serves between 30-40 different families in need each week—over 120 families each month. Donations remain an important source of its ability to help these people. Remember to help out the food pantry with a donation of food each Sunday.

Here are suggested donations. There is a box just inside the sanctuary for your donation.

1st Sunday—Instant Oatmeal

2nd Sunday—Ranch Style Beans

3rd Sunday—Spaghetti sauce (in cans)

4th Sunday—Chili without beans

5th Sunday—Canned pineapple

In addition to the above, the Commerce Food Pantry is always in need of grocery paper bags with handles (Braum's paper bags are perfect). If you have any spare paper bags, please consider donating them at any time.

FPC Is Online!

www.facebook.com/fpcccommerce

www.facebook.com/group/fpcccommerce.

<https://twitter.com/fpcccommerce>

www.fpc-commerce.com.

Gardeners Wanted

The Commerce Community Garden Association is seeking experienced and first time gardeners for the spring of 2019. The association has 45 plots in its community garden, which is located behind the First United Methodist Church, just off State Highway 24.

Your participation is encouraged. If possible, make plans to attend an organizational (kick-off) meeting on Tuesday, March 19. Call one of the numbers below to indicate you are coming to this important meeting, which is a brown bag lunch meeting (bring your own bag) that will be held in the Magnuson Hotel Conference Room.

Dr. Royce Lee, garden manager, will be conducting the meeting to discuss plans of engagement and to answer questions.

The numbers to call are 903-468-2659 (**Bob Johnson**, Commerce Community Action Program), and 903-366-6047 (**Dr. Royce Lee**, garden manager).





Newsmakers

Walt Davis has been selected to be “artist in residence” at three national parks this year. **He and Isabel** will go to **Guadalupe Mountains National Park** the last week of April and the first week of May. They will stay in an efficiency apartment in the compound where park rangers live. Walt will paint and conduct nature journaling pop-up workshops for visitors.

The first two weeks of June the couple will drive up to **Capitol Reef National Park** in southern Utah. There they will stay in a cabin with a view nestled in an old Mormon fruit orchard.

November will find them camped out in their travel trailer on **Padre Island National Seashore**. Walt is looking forward to six weeks of daily painting in some exceptionally beautiful places this year.



Views (including a window view) at Capitol Reef National Park.



Just how beautiful are the places Walt and Isabel will enjoy? Here's some descriptions taken from Google and Wikipedia.

Guadalupe Mountains National Park is in the vast Chihuahuan Desert of western Texas. It's known for its bright-white Salt Basin Dunes, wildlife-rich grassland and fossilized reef mountains. The Guadalupe Peak Trail weaves up through a conifer forest to the state's highest summit, with views of the rocky El Capitan peak to the south. In the north, the McKittrick Canyon Trail is known for its colorful fall foliage.

Capitol Reef National Park is in Utah's south-central desert. It surrounds a long wrinkle in the earth known as the Waterpocket Fold, with layers of golden sandstone, canyons and striking rock formations. Among the park's sights are the Chimney Rock pillar, the Hickman Bridge arch, and Capitol Reef, known for its white sandstone domes. In the north are the towering monoliths of Cathedral Valley.

Padre Island National Seashore is a national seashore located on Padre Island off the coast of South Texas. PAIS is located on North Padre Island and consists of a long beach where nature is preserved. Padre Island National Seashore separates the Gulf of Mexico from the Laguna Madre, one of a few hypersaline lagoons in the world. The park protects 70 miles of coastline, dunes, prairies, and wind tidal flats teeming with life. It is a safe nesting ground for the Kemp's Ridley sea turtle and a haven for over 380 bird species. It also has a rich history, including the Spanish shipwrecks of 1554.





More Newsmakers

Editor's note: *This is late, but is being published now because the honor received is great and we were just notified of it. The information was taken from an article in the Fall, 2018 edition of PRIDE, the TAMUC alumni publication.*

FPC's **Hoyle and Ann Julian** were recognized as **Distinguished Alumni** by Texas A&M University at Commerce in May of 2018. They were part of the largest group of Distinguished Alumni to date.

Hoyle graduated from East Texas State University in 1960 with a B.S. Degree in Mathematics. In 1965 he earned a Master's degree in math and physics.

He retired from working for ARCO Oil and Gas in 1992, and took up teaching at the university here in 2000.

Ann Julian is also a graduate from ETSU, with B.S. and M.S. degrees. She also earned a subsequent library certification and earned Who's Who recognition in 1976 and 1982. She retired from a teaching career in 1992.

The Hoyles have been married since 1961. Together, they have endowed seven scholarships to TAMUC. They are members of the Founder's Circle, the Heritage Society and the Society of 1989. In 2005, the Julians received the prestigious Mayo Award. They have a science lab named after them in the science building.



Presbyterian News

PCUSA News for Jan. 2-9, 2019

A lot of interesting stories can be found in the latest edition of the PCUSA News. You can find stories about the challenges and opportunities facing the Presbyterian Church in 2019, a woman of the cloth who is also a woman of the belt, the journey of today's asylum seekers, inmate testimonials, and much more by clicking [here](#).

Latest Grace eNews

Find out what is going on at Grace Presbytery by reading the Grace eNews. For the latest edition, click [here](#).

Upcoming Community Events



GriefShare Hosts New Seminar Feb. 4

Loss of a Spouse is a new one-night seminar designed specifically for widows and widowers.

This seminar helps men and women grapple with the challenges of being widowed. The seminar features an inspiring 35-minute video that's filled with moving stories, practical advice, and a variety of perspectives on spousal loss.

After the video, you'll have the opportunity to discuss what you learned with other widows and widowers. You'll discover that you're not alone in your grief and that what you're going through is normal. Plus, you'll receive a booklet to take home with over 30 short readings on how to rebuild your life.

The *Loss of a Spouse* seminar will be held on Monday night, Feb. 4, from 6 to 8 p.m. in the Parlor of First Baptist Church of Commerce. Light refreshments will be served. For more information, call 214-729-7525.

GriefShare Starts Spring Semester Feb. 11

The local GriefShare group in Commerce will hold its spring semester from Feb. 11 through May 6, on Monday nights in the Parlor of First Baptist Church of Commerce. The meetings are from 6-8 p.m.

The program consists of a video curriculum and optional discussion on different grief-related topics. Participant's handbooks are available.

Each GriefShare session has three distinct elements. First, a video seminar is shown featuring top experts on grief and recovery subjects, including expert interviews and real-life case studies.

After viewing the video, participants will spend time as a support group, discussing what was presented in that week's video and what is going on in their lives. Discussion is optional.

Finally, participants have the opportunity to use their workbook during the week for further personal study of the grieving process.

This group is led by Jim and Teena Ayres. For more information, call 214-729-7525.



Mores Upcoming Community Events



MLK Awards to be Presented Jan. 20

The 12th annual Martin Luther King, Jr. Awards will be handed out in Commerce on Sunday, Jan. 20. The event is presented by the Hunt County African American Leadership Conference to honor area community members who have emulated the late Dr. King by their work fostering the dignity and the common humanity of all men.

The event will begin at 2:30 p.m. at Mt. Moriah Baptist Church, located at 202 Champions Lane.

Daddy-Daughter Dance

The Northeast Texas Children's Museum in Commerce will host a "Unicorn Ball" on Feb. 2 at its location, 2501 St.Hwy. 24. The annual Daddy-Daughter dance will also include crafts, face-painting, and refreshments with a unicorn theme.

For tickets and how to get them as well as other information, call 903-886-6055.

ALL Hands on Deck! Show Coming to Greenville Feb. 14

Now in its 6th year of touring nationally, **The ALL HANDS ON DECK! Show** is an All-Singing, All-Dancing, All-American 1942 Roadshow & Radio Broadcast reproduction filled with the songs, dances and laughs that America has loved for 70 years!



It is coming to the Greenville Municipal Auditorium on Feb. 14 at 7:30 p.m. Featuring Broadway Veteran Jody Madaras, four sparkling New York voices, and the rich sounds of the LIVE 9-piece Hollywood Victory Caravan Orchestra, classic commercials, tight harmonies, impromptu skits, and 42 of the greatest American songs ever written, **The ALL HANDS ON DECK! Show** offers a musical message for all Americans with a full-circle patriotic salute celebrating the American way of life.

For tickets or more information, call 903-457-2994.

New

on the

Bulletin

Board

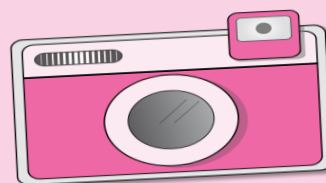
- ♦ A Thank-you note from Frieda Branom.
- ♦ A flyer inviting you to The "All Hands on Deck" show, a Valentine's Day event in Greenville.

Did
you
know?

**Early Presbyterians
founded congregations
in America as early as
the 1630s.**

Church roots are traced to Scotland and the writings of John Calvin, but in America, Presbyterians were the earliest Reformed immigrants. They settled along the East Coast and founded congregations in the early 1630s. By 1706, seven Presbyterian ministers formed the first Presbyterian presbytery in America. Then in 1717, a synod was organized of four other presbyteries.

Source: Christianity.com



**Got a picture for *The Good News*
that you would like to share?
Email it to [tofpc-commerce
@embarqmail.com](mailto:tofpc-commerce@embarqmail.com)**

**Deadline for the
February edition of
The Good News is Tuesday, Jan. 29.
The issue will be published on Jan. 31**

In Our Prayers at First Presbyterian

Our Troops	Gordon Hunter	Sara Grace Pullen	Melba Blount
Amy Lopez	Joe Yeakley	Grace Byrd	Gayle Shumate
Gladys Gray	Mildred Miller	Gaye Furry	Preston Helton
Catherine King Robertson	Bennie Neve	Ron Davis	Jan Burns
Audrey Hucks	Larry Ratliff	Jack Gray	Jean Angotti
Jim Calvert	Tammi Fucci	Adele Reeves	Bob Wilkins
Joe Dipiazza	Deryl McKenzie	Danny Spruel	Kristen Anderson
Family of Freda Lambert	Nancy Smith	Gary and Melba Strobel	Pat Skauge
Joe Tinch	Layne Rylander	Eddie Fuller	

Additions to Prayer List

FPC's **Eddie Fuller** has been added to our prayer list. He had some serious complications while hospitalized at Hunt Regional Medical Center recently, but he is now recovering at home.



Please pray for Eddie and all those on our list.

If you know of someone who wants to be on our prayer list, please contact the church secretary.

Assisting with Worship

The following people are assisting with worship the next two Sundays.

January 20

Head Usher: **Monty Howard**

Candle Lighter: **TBD**

Liturgist: **Susan Reeves**

January 27

Head Usher: **Ric Estes**

Candle Lighter: **TBD**

Liturgist: **Brenda Estes**

Please remember to let our worship leaders know how much you appreciate them. If you would like to help with worship in some capacity, please contact Rev. Rasco or the church secretary.

Upcoming Bible Readings

Sunday (Jan. 20) Is the Second Sunday after Epiphany

Old Testament: Isaiah 62:1-5 *The Vindication and Salvation of Zion*

Psalter: Psalm 36:5-10 *Human Wickedness and Divine Goodness*

Gospel: John 2:1-11 *The Wedding at Cana*

Epistle (and sermon focus): 1 Corinthians 12:1-11
Spiritual Gifts

Sunday (Jan. 27) Is the Third Sunday after Epiphany

Old Testament: Nehemiah 8:1-3, 5-6, 8-10 *Ezra Summons the People to Obey the Law*

Psalter: Psalm 19 *God's Glory in Creation and the Law*

Gospel: Luke 4:14-21 *Humility and Hospitality / The Parable of the Great Dinner*

Epistle (and sermon focus): 1 Corinthians 12:12-31a *One Body with Many Members*



Did We Forget Something?

Maybe we forgot an event you are organizing for FPC or a committee report you wanted to get in The Good News. Whatever it is, let us know.